



University of
Reading
MALAYSIA

DAY IN
THE LIFE
OF A

Psychology Student

School of Psychology and Clinical Language Sciences
University of Reading Malaysia

CURIOUS ON LIFE AT OUR CAMPUS?

Introducing the
first issue of our
*Day in the Life +
FAQ* series, giving
a glimpse into
our daily lives!



FEATURING
YEAR 1, YEAR 2 & MOBILITY STUDENTS

WHAT IS THE *DAY IN THE LIFE* SERIES?

Ever wanted to know what it's *actually* like to be a psychology student? This project aims to provide a realistic insight into the daily lives of our psychology students at UORM!

First established by the *PCLS Press*, this series is a student-led initiative special to our department, with this issue marking its first official publication.

It features two segments:

- ***Day in the Life*** (DITL)
- ***Frequently Asked Questions*** (FAQ)

The *DITL* mimics a vlog-like format to highlight a typical weekday from 9 AM to 6 PM, with the *FAQ* addressing specific and interesting programme questions submittable via the QR code at the end of the issue.



MEET THE *Guests*

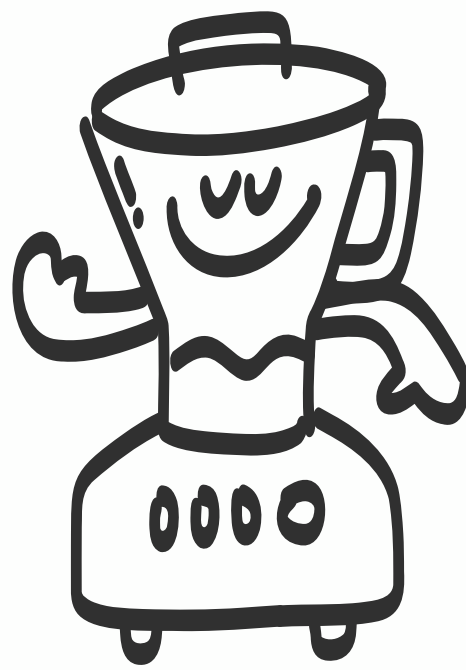


Vivian

YEAR 1

Local
Year 1 student

International
Foundation
Programme (IFP)
progressor

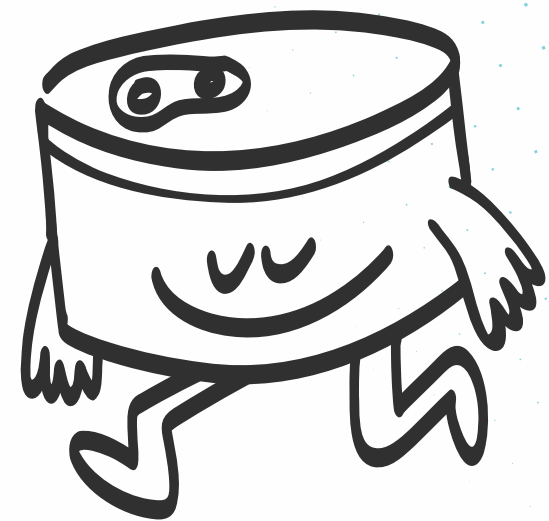


Keerthana

YEAR 2

Local
Year 2 student

President of the
Psychology
Society 25/26



Joseph

MOBILITY

International
Year 2 student

Mobility student
from the UK
campus (UOR)

9AM

Start!

YEAR 1



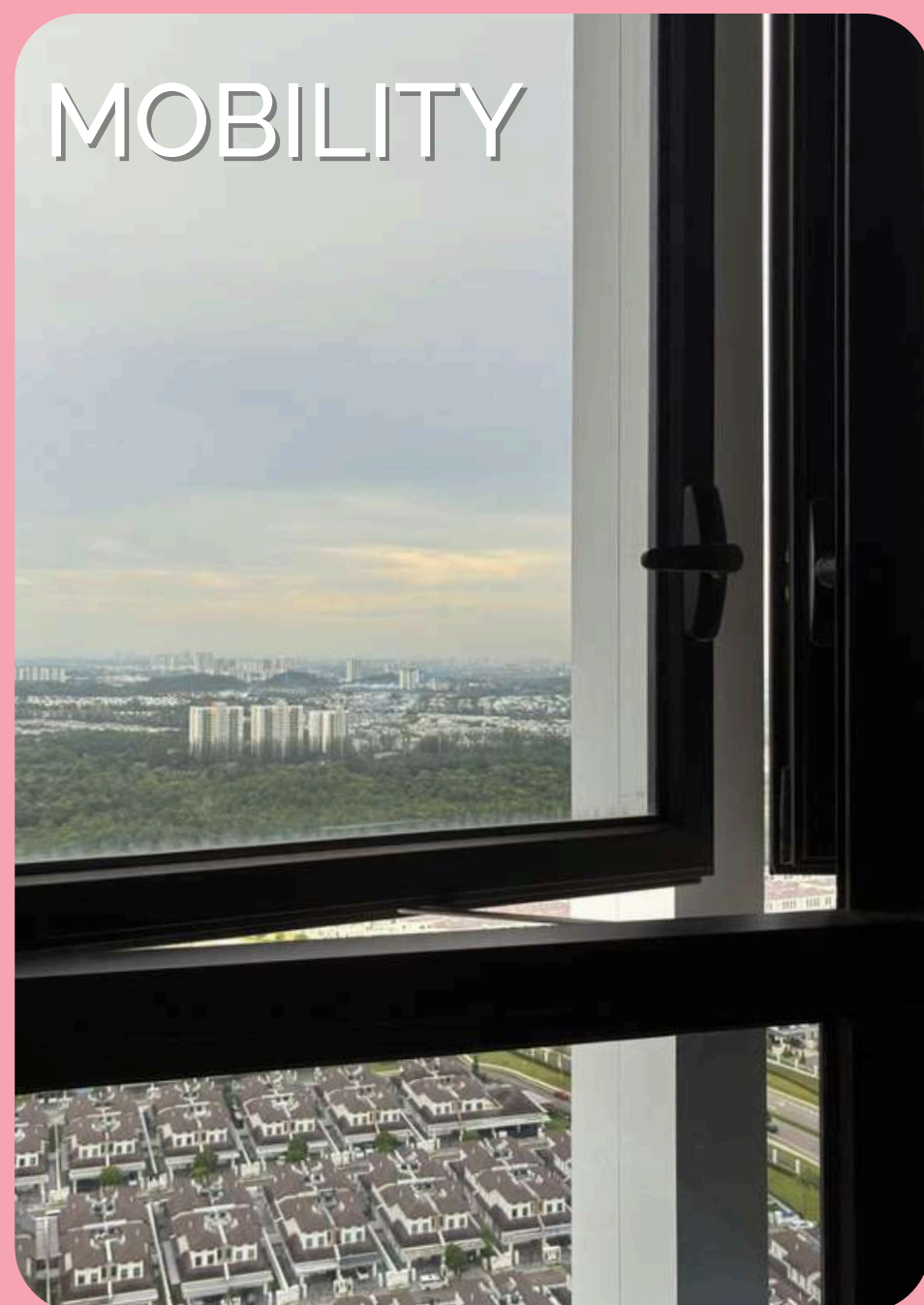
My mom drives me to campus.
#notreadytodrive

YEAR 2



Walking to campus!

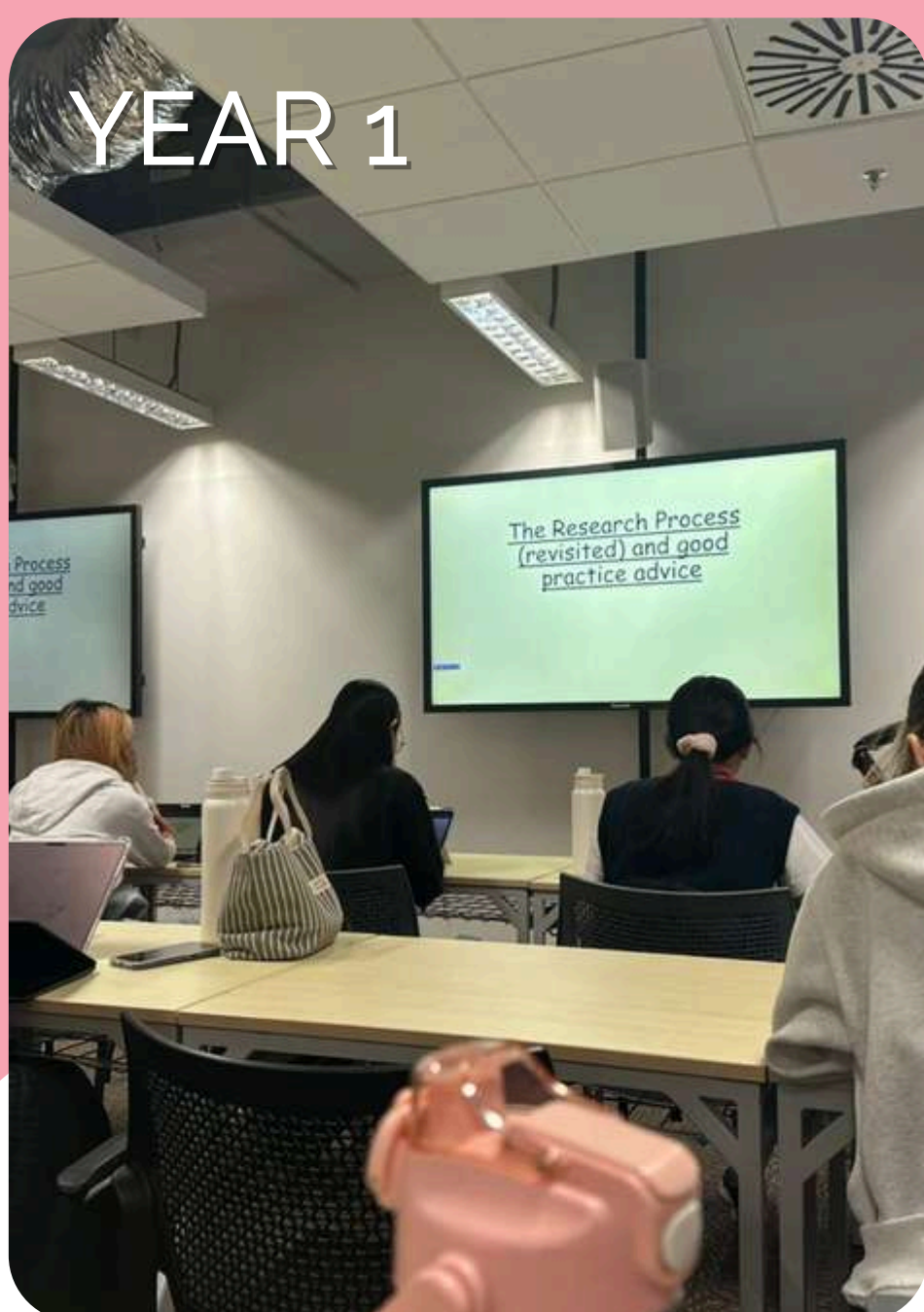
MOBILITY



Waking up.
No 9AM class for today.

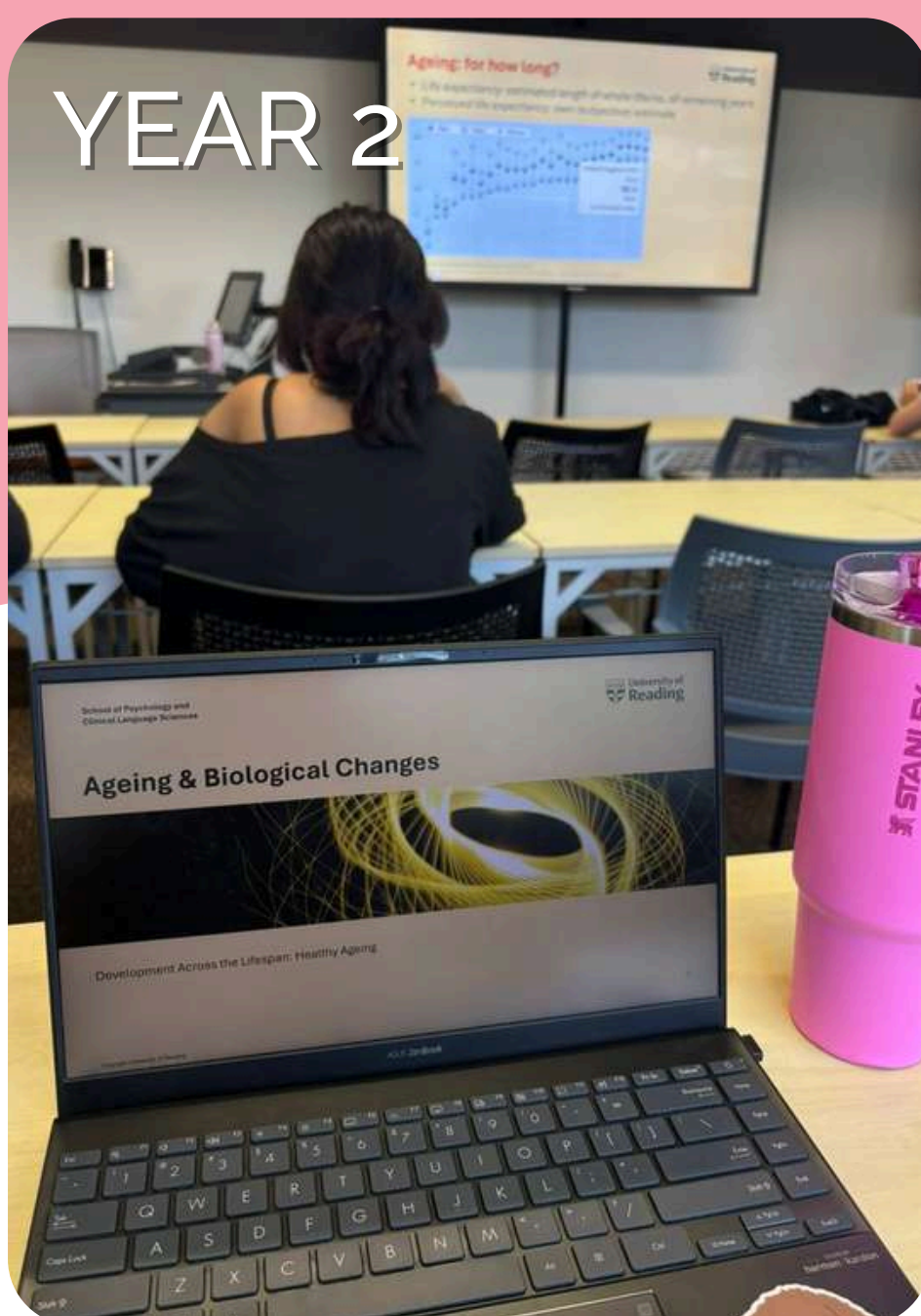
10AM

YEAR 1



Halfway done with my first class.

YEAR 2



Remember to take notes.

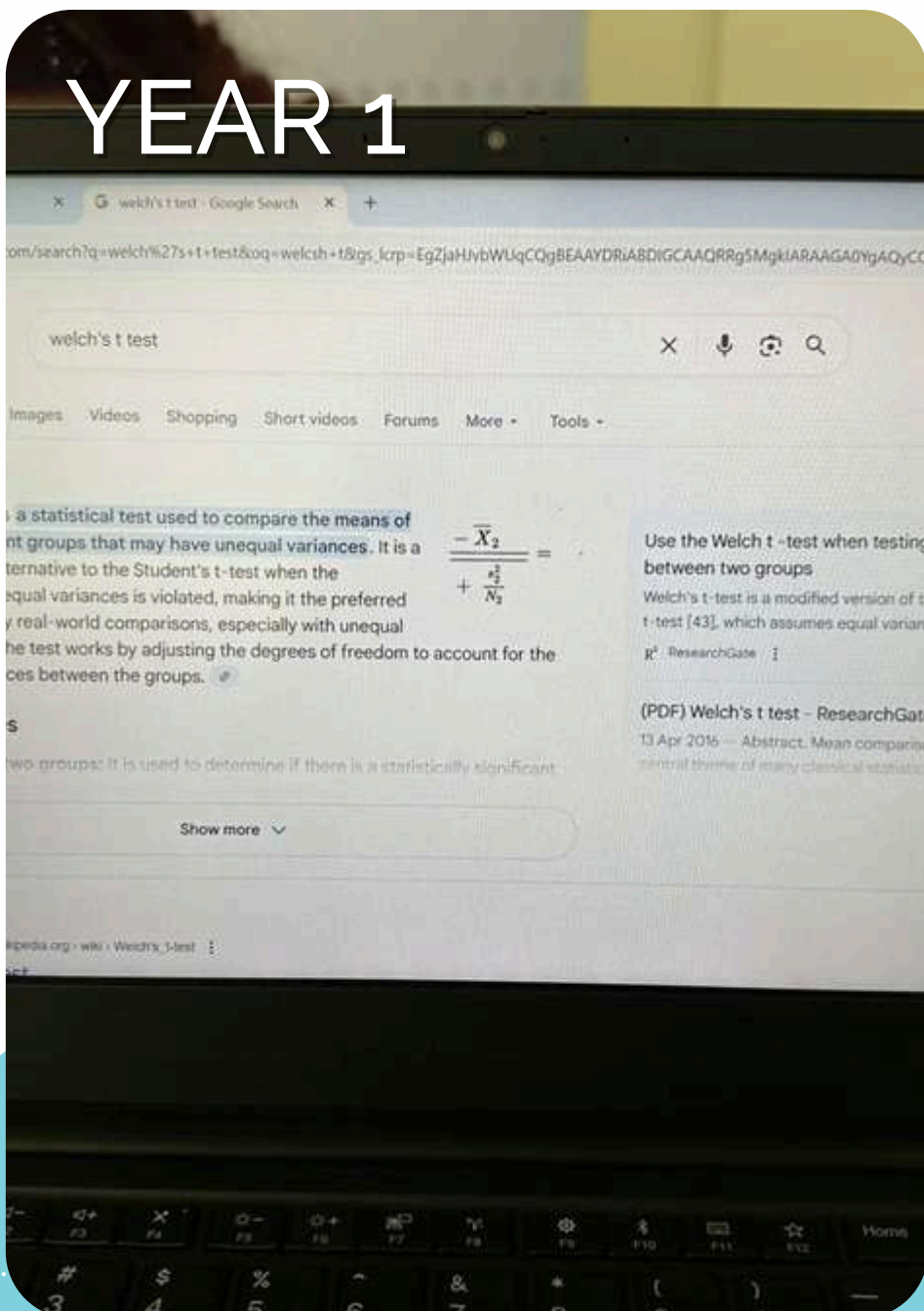
MOBILITY



University life means housemate life.

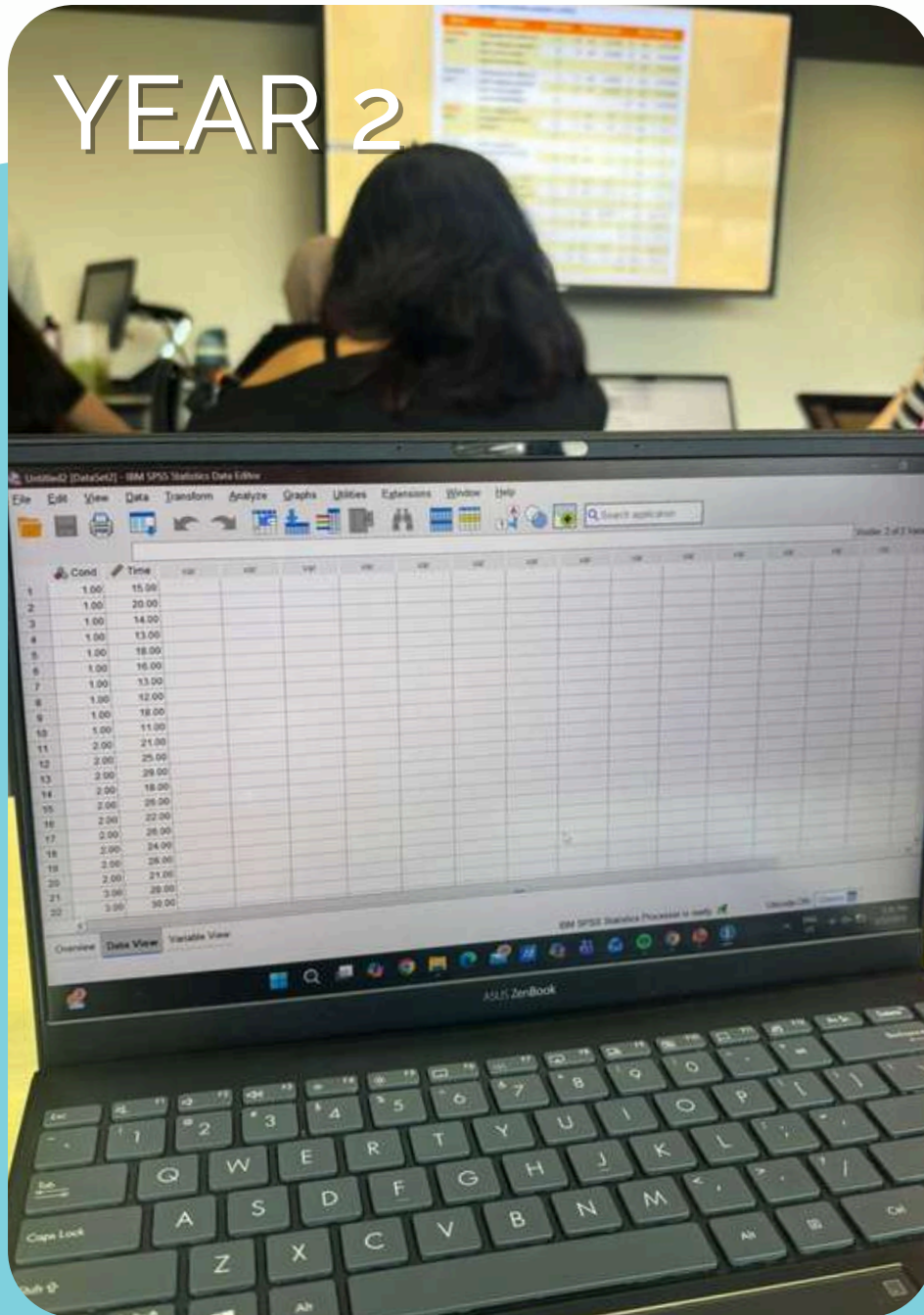
11AM

YEAR 1



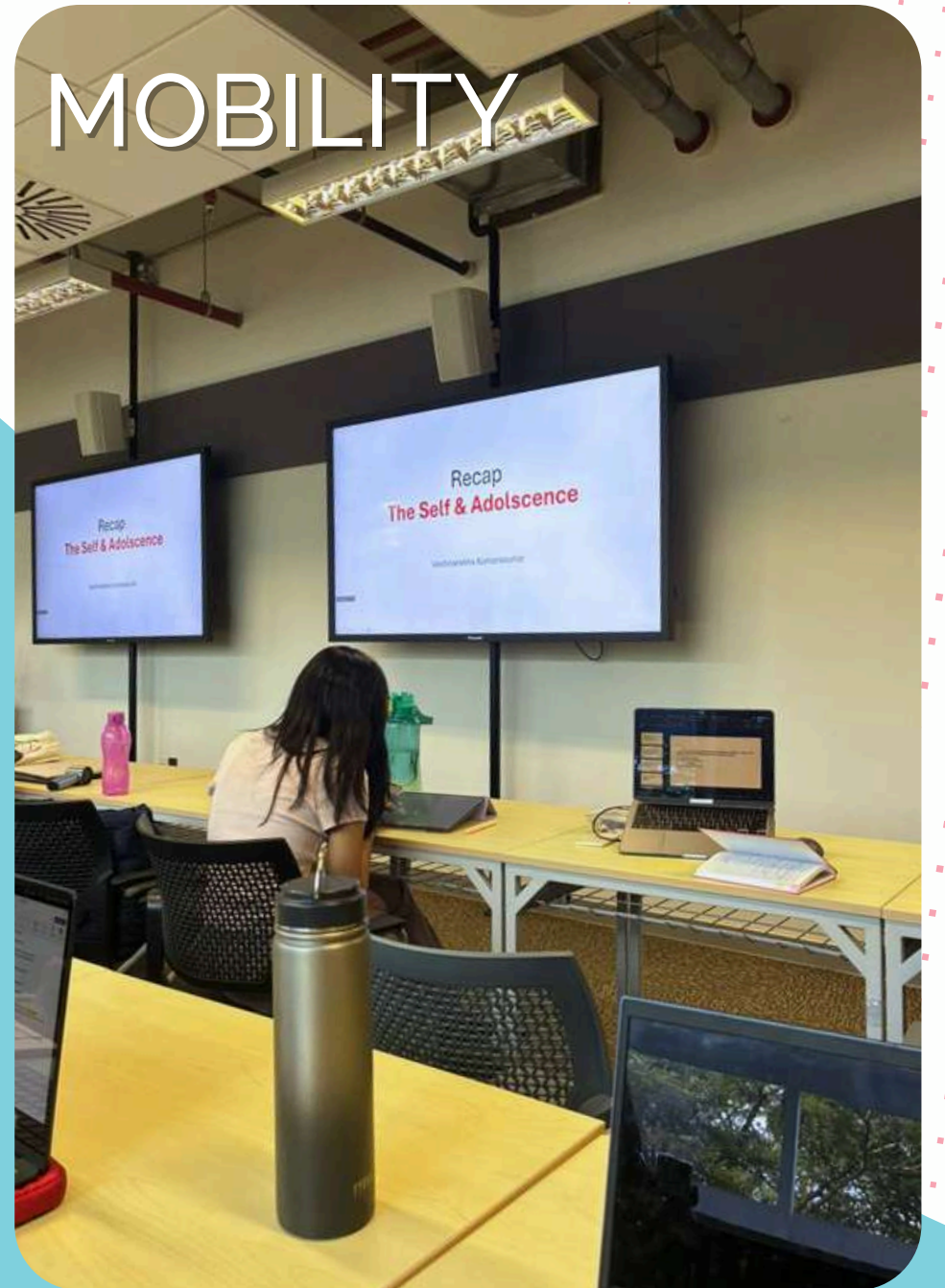
A laptop is a must in university.

YEAR 2



Most classes will be two hours long.

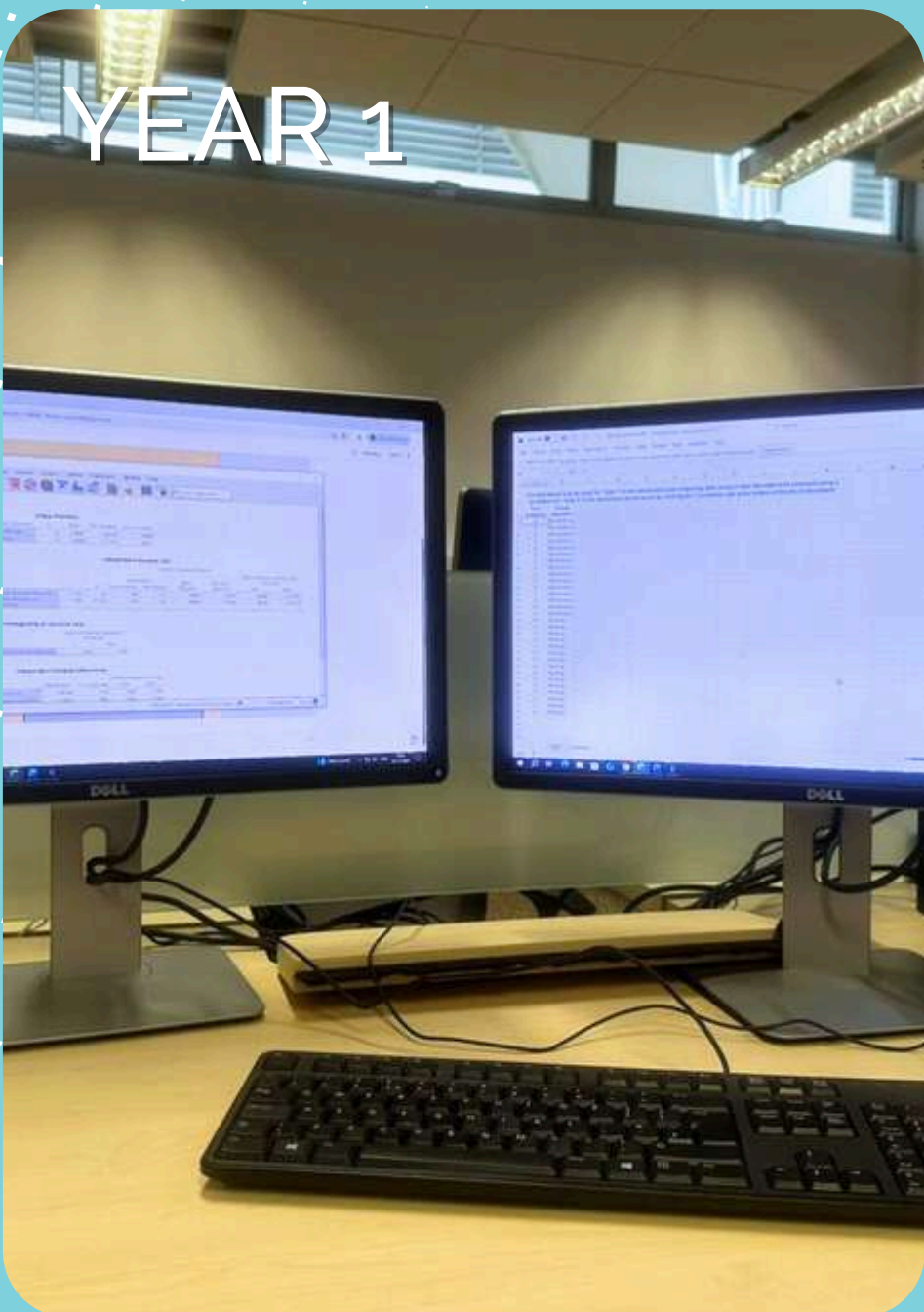
MOBILITY



First class of the day.

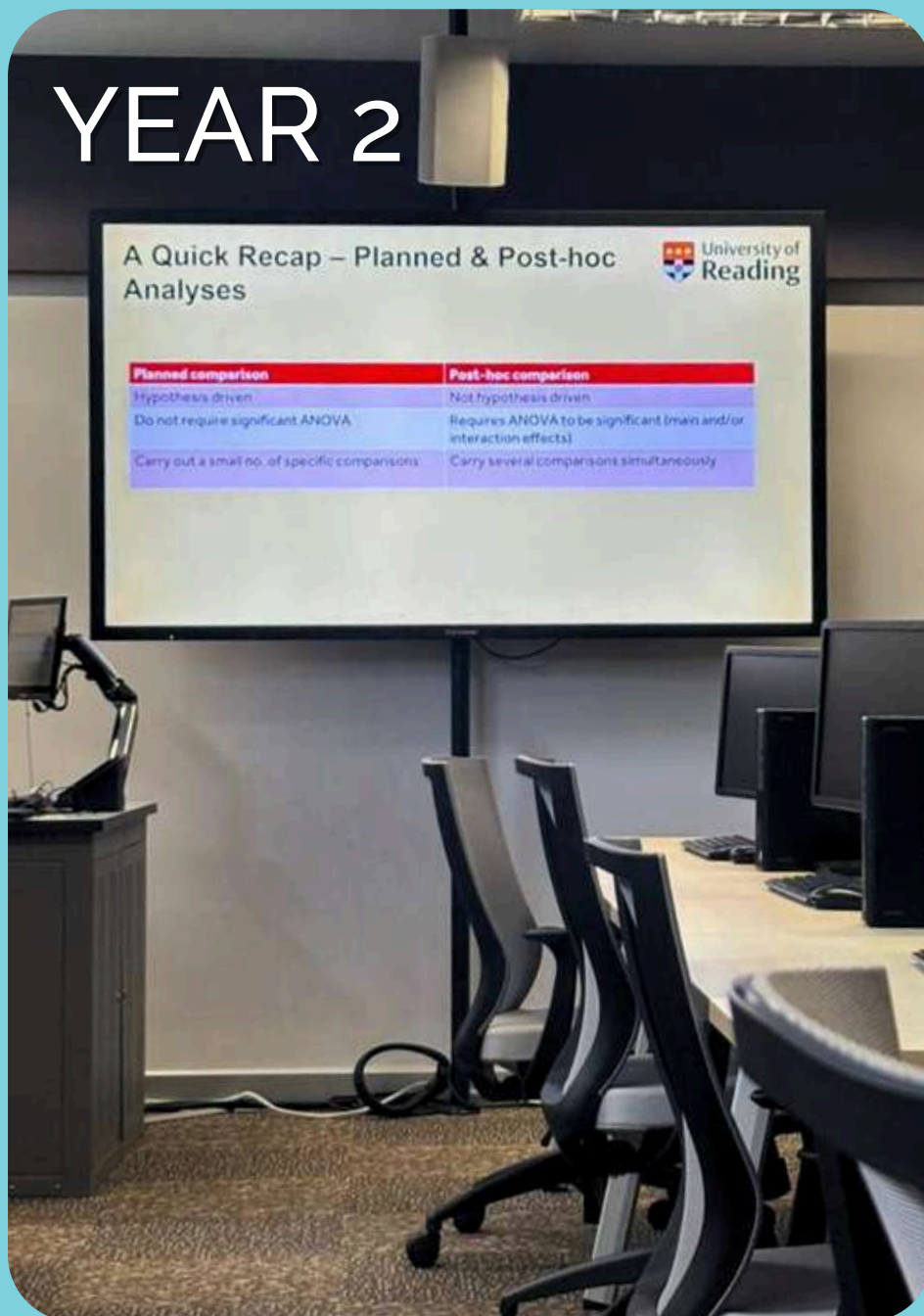
12PM

YEAR 1



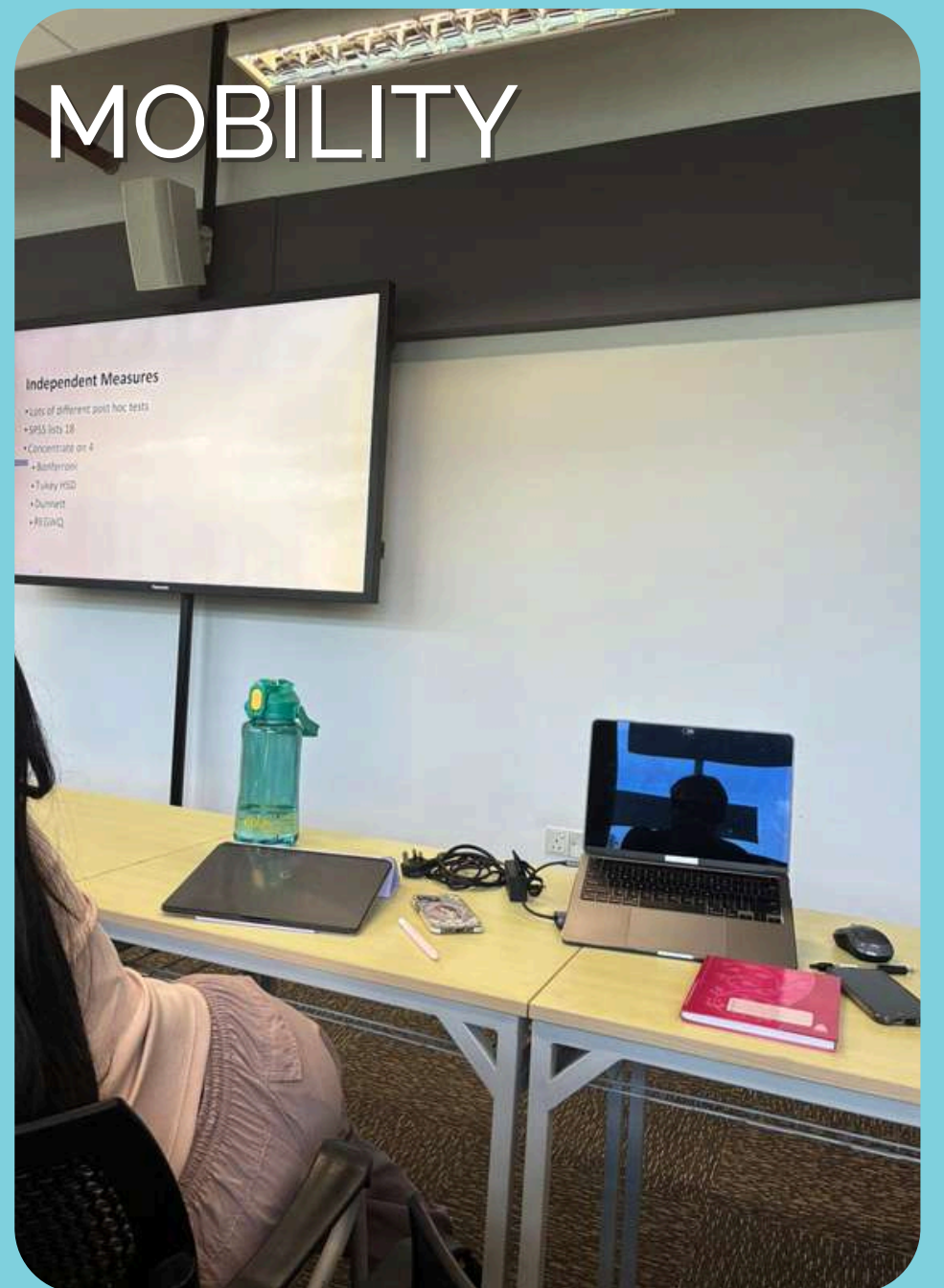
Onto our lab for statistics! They're usually 1 hour.

YEAR 2



There's a lot of statistics...

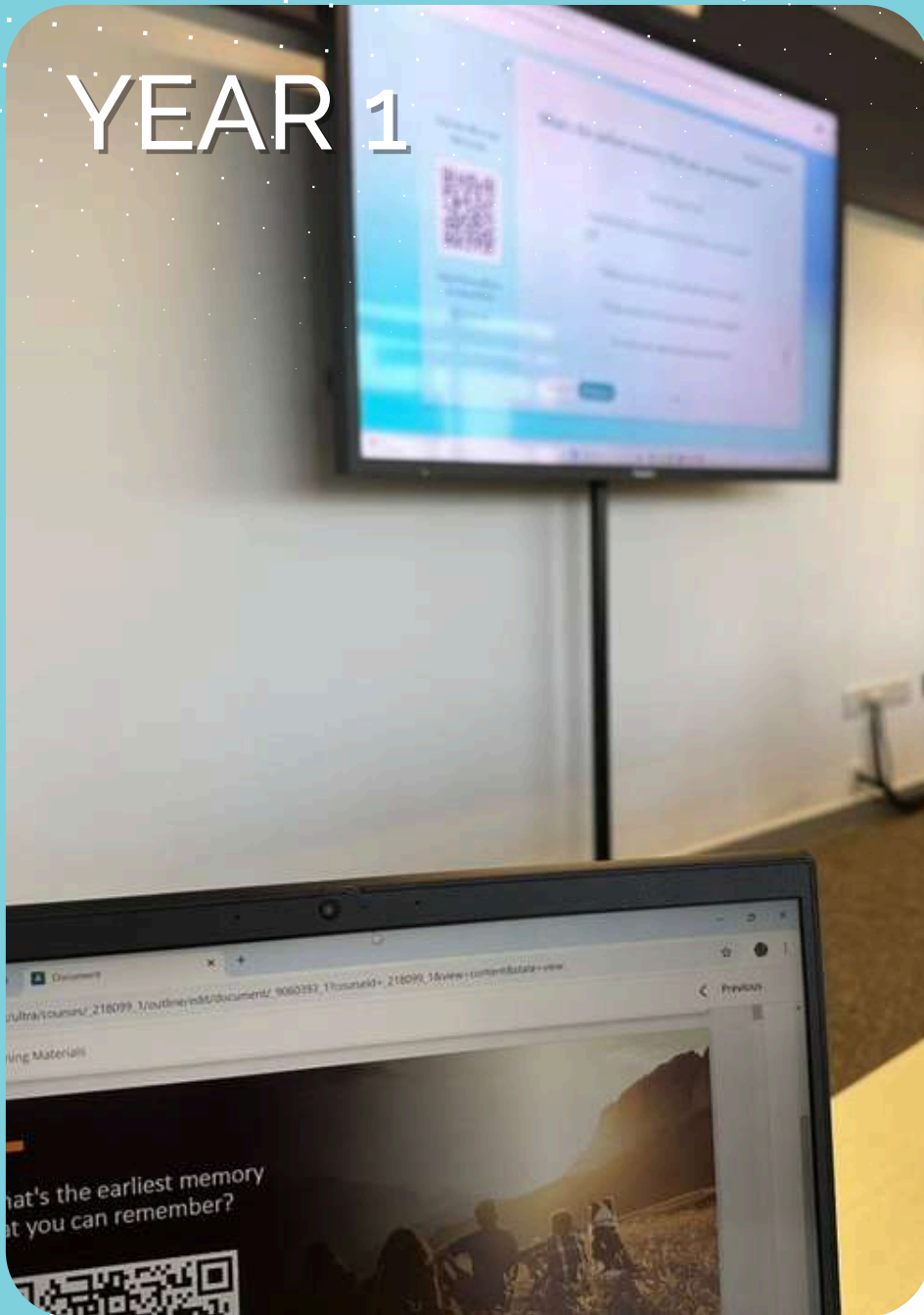
MOBILITY



You can use a mix of typed and written notes.

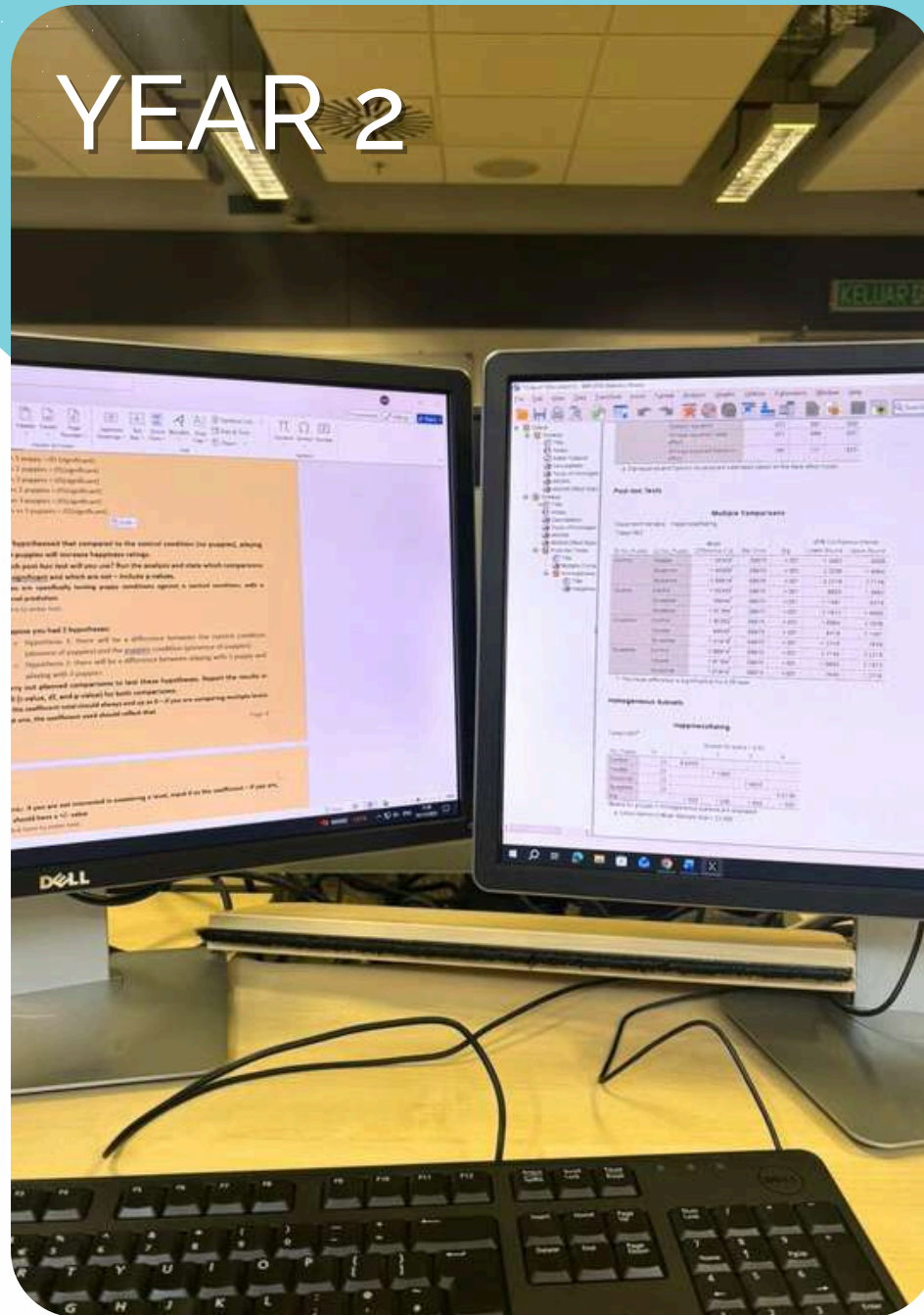
1PM

YEAR 1



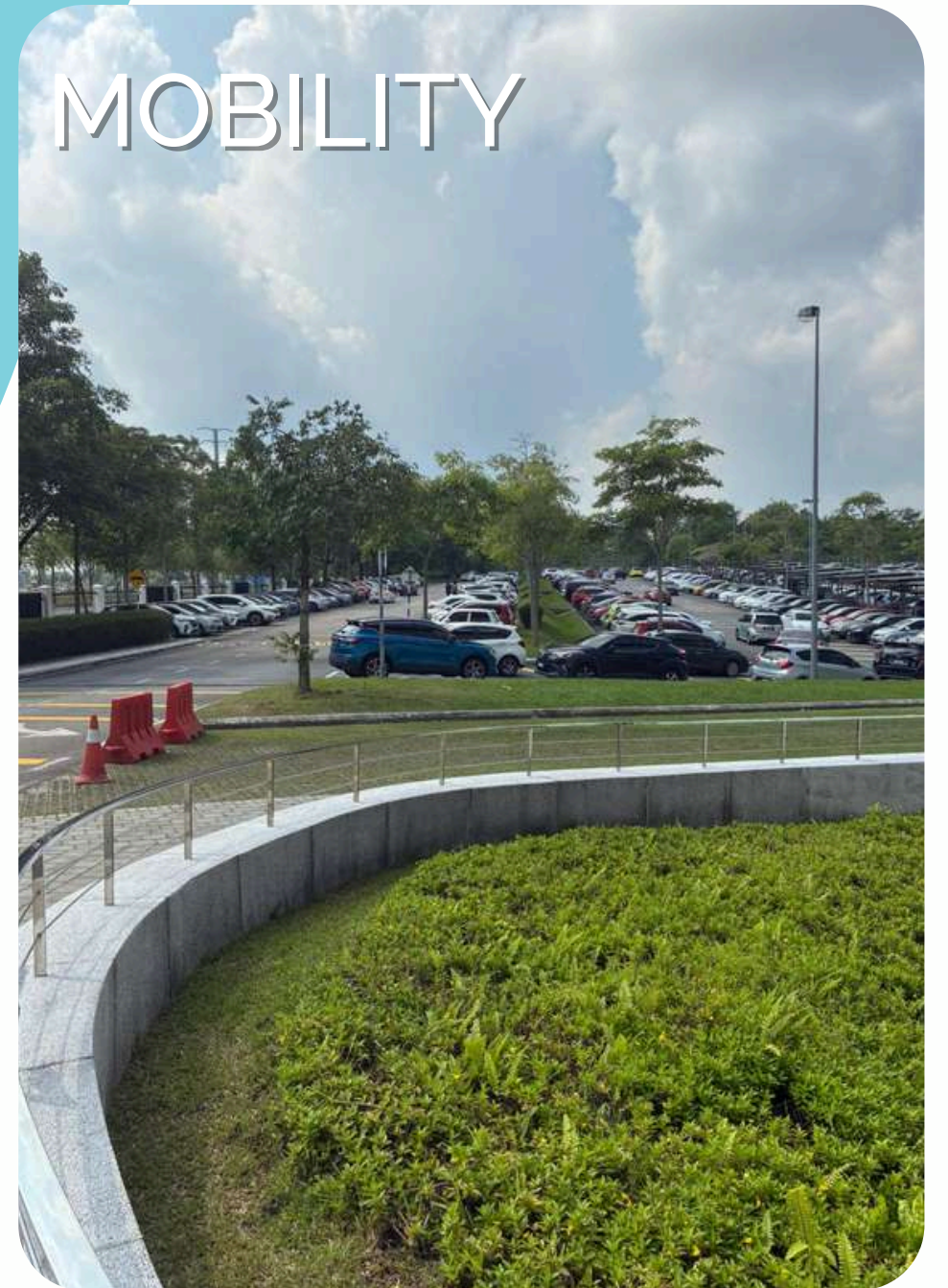
Our busiest days are Mondays.

YEAR 2



We use a software for the calculations.

MOBILITY



Heading out for lunch!

2PM

YEAR 1



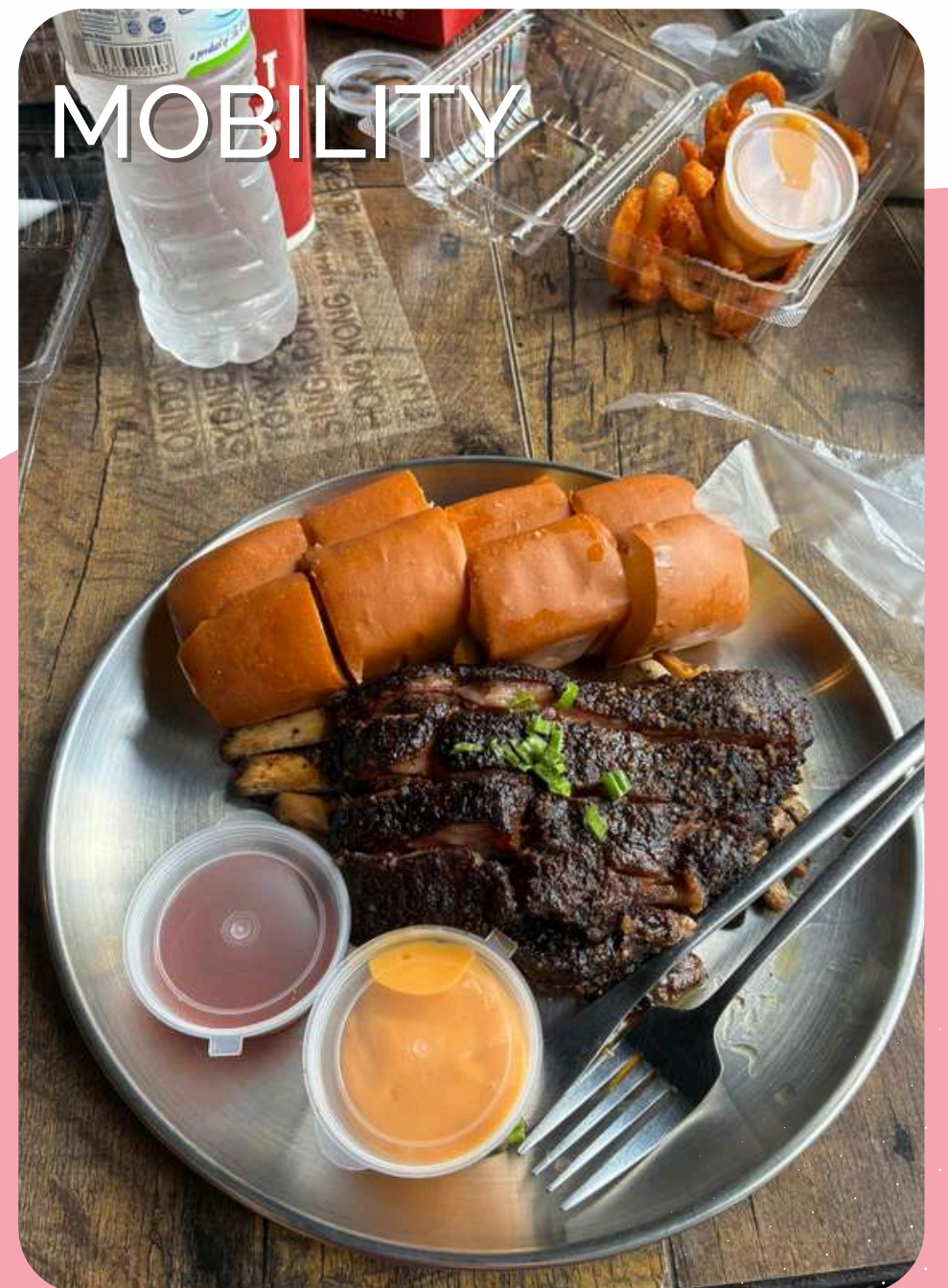
Lunch at NewMed University next door.

YEAR 2



There are nearby restaurants you can walk to!

MOBILITY



Good food is worth the distance.

3PM

YEAR 1



Only two classes for the day!

YEAR 2



Heading to our library to study.

MOBILITY



Back to campus for a 1 hour class.

4PM

YEAR 1



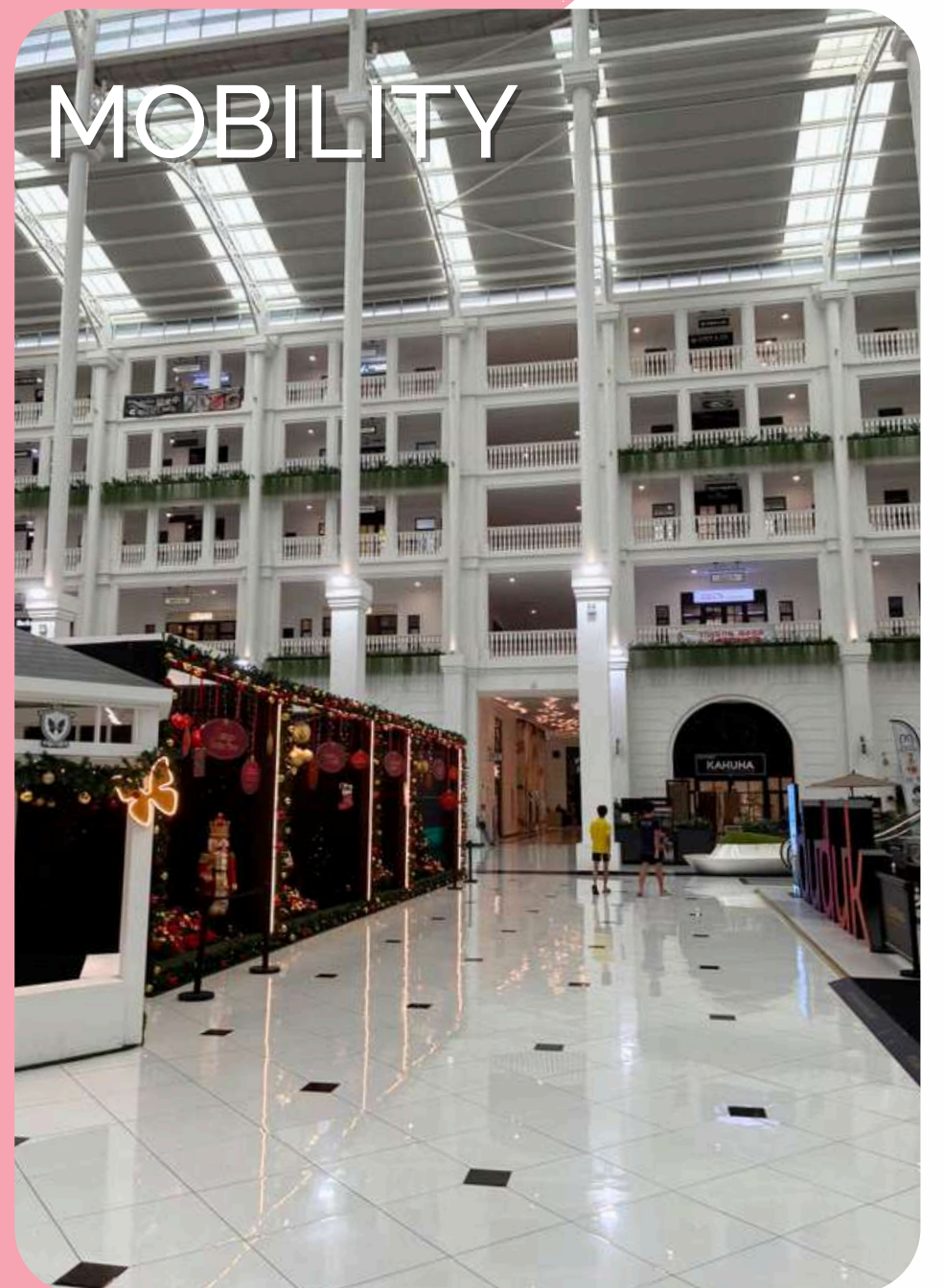
A little shopping after class.

YEAR 2



Out to go iceskating with friends!

MOBILITY



Went to the mall just a few minutes away.

5PM

YEAR 1



Early dinner at home. Yummy.

YEAR 2



Study hard but also have fun!

MOBILITY

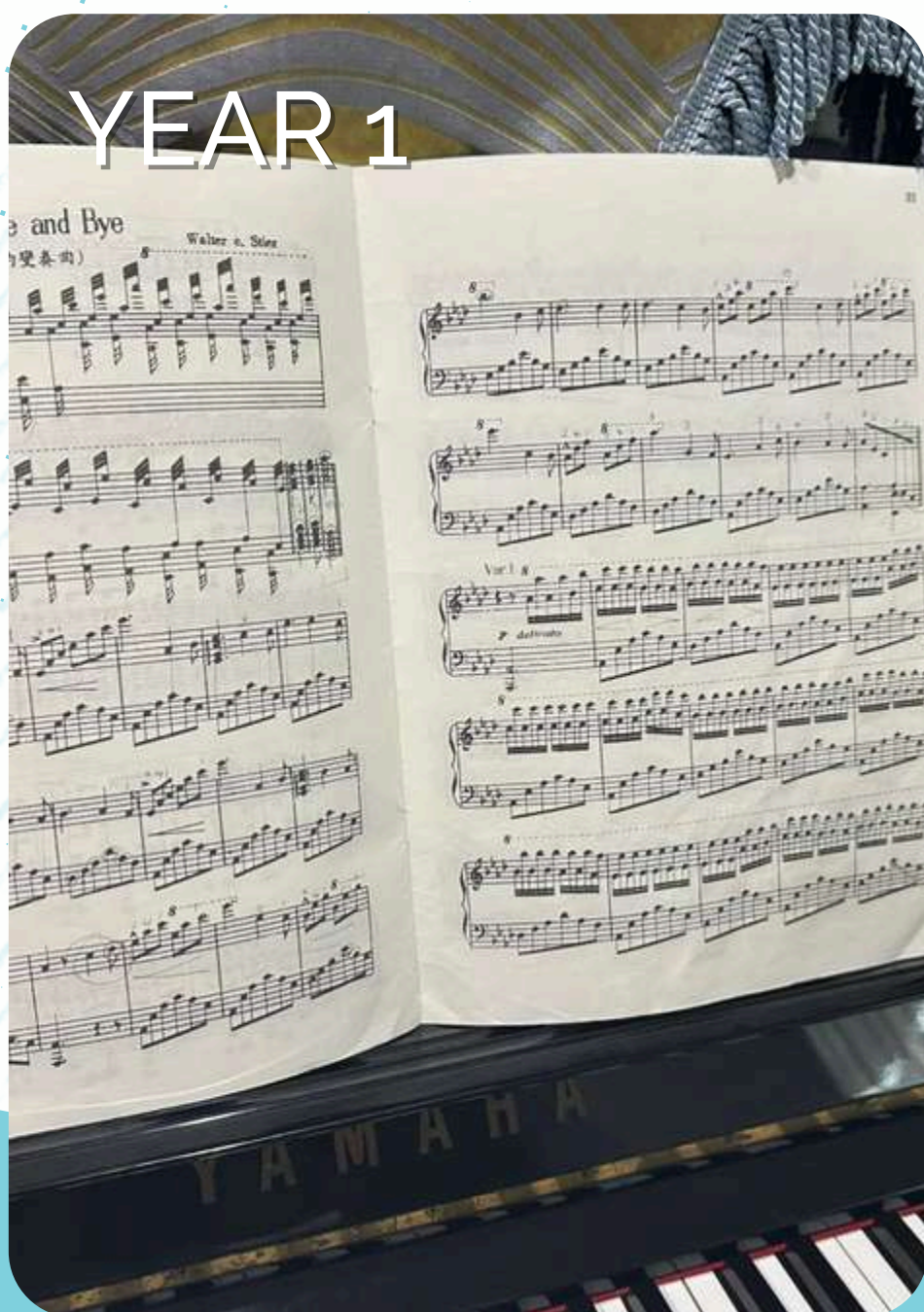


Played laser tag with friends!

6PM

End!!

YEAR 1



I usually have piano or ballet classes.

YEAR 2



Back at the hostel watching videos.

MOBILITY



Dinner time.

FREQUENTLY ASKED *Questions*

I'm not from the science stream in SPM. Can I progress into the BSc Psychology degree?

Yes! However, students must have taken at least one Science subject (e.g., Biology, Chemistry, or Physics) in SPM/IGCSE.

What are the career opportunities for a Psychology graduate?

- Education & childcare
- Healthcare & counselling
- Business & management
- Marketing, advertising, behavioural economics
- Human factors and ergonomics, user experience
- Sports Psychology
- Government Service

What is the difference between the 3-year and 4-year programme at UoRM?

The 3-year programme is the standard degree duration. Whereas the 4-year programme includes an additional year of professional work placement between Year 2 and your final year.

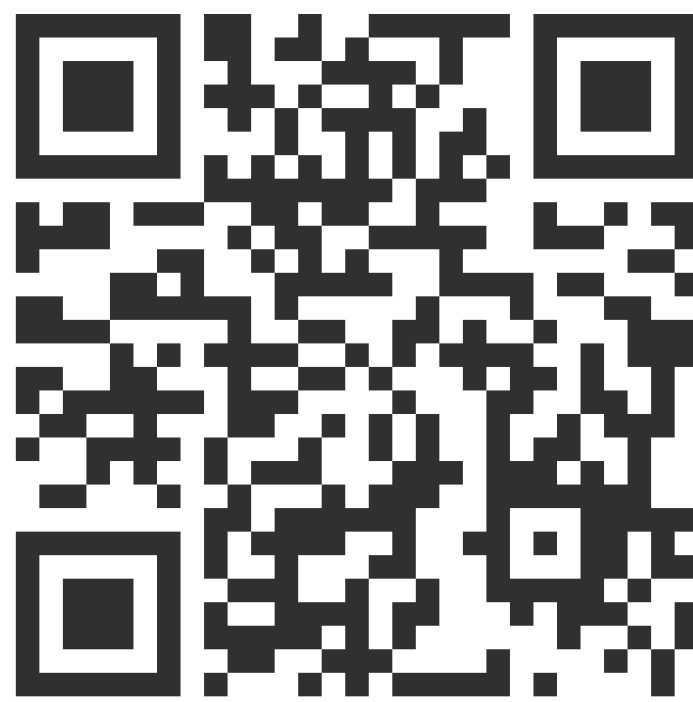
If I opt for the 4-year programme, can I have multiple shorter placements within the 1-year placement?

e.g. 3 months at workplace A and 5 months in workplace B, instead of all months in workplace A.

Ideally, students will complete their placement in one organisation to gain depth and breadth of experience. However, there can be occasions when it is split. For example, when a student independently sourced 2 excellent opportunities that aligned well with their career aspirations and organised them to run consecutively throughout the year.

YOUR
Questions
OUR
Answers!

We welcome more inquiries here:



This issue was brought to you
by the PCLS Press.



Want more?

Stay tuned for our **next** issue:
Year 3, PhD, & Lecturer edition!