

UoRM's SPCLS Placements Portfolio

School of Psychology and Clinical Language Studies



About SPCLS Placements

Transforming Theory into Practice

A placement is a structured period of work experience undertaken as an integral component of your Psychology degree. Unlike casual work experience, your psychology placement is carefully designed to complement your academic learning, allowing you to:

- Apply theoretical knowledge from your courses to real-world situations
- Explore potential career paths in various psychology-related fields
- Build a network of professional contacts
- Enhance your CV with relevant experience that sets you apart

Our placements can be paid or voluntary positions and span diverse settings – from educational institutions and healthcare facilities to research organizations and corporate environments.

Why Do Placement Matters

Psychology is a versatile discipline with applications across numerous sectors. Through our placement program, you will:

Gain Professional Insights

Gain real-world insight into how psychology is applied, explore various career paths, and discover the areas that align with your interests.

Develop Essential Skills

Develop essential workplace skills including communication, teamwork, critical thinking, and adaptability to thrive in professional environments.

Stand Out to Employers

Strengthen your CV with hands-on experience, gain valuable references, and boost your chances of securing graduate employment through industry connections.

Our programme data shows that students who complete placements are significantly more likely to secure graduate-level employment within six months of graduation.

The SPCLS Placement Experience

At SPCLS, we've developed a comprehensive approach to placements that ensures you receive maximum benefit from your experience:

- **Structured Learning:** Integrated into your degree with clear objectives and assessments.
- **Extensive Provider Network:** Over 20 partner organisations offering relevant psychology experiences.
- **Professional Support:** Guidance from our Placement Coordinator and Career Office throughout the journey.
- **Career Development:** Enhanced through workshops, skills sessions, and networking opportunities.

Diverse Placement Opportunities

Education and Early Intervention

These placements provides opportunities to understand cognitive development, learning processes, behavioral management, and intervention approaches for diverse needs.

Mainstream Education

- R.E.A.L Schools Johor Bahru
- Clover Learning Centre, Johor
- Joyous Kiddy Preschool, Johor

Specialised Education & Intervention

- ZERA International Special Education Needs School
- Bridging Minds Academy, Johor
- Rise & Shine Therapy Centre, Johor
- Calvary Victory Centre, Johor

Health and Clinical Settings

Clinical placements offer students exposure to assessment, intervention, and therapeutic approaches.

These experiences are particularly valuable for those considering careers in clinical psychology, counselling, or psychotherapy.

- Labyrinth Psychological Center, Johor
- Soul Garden Counselling, Johor
- Agape Counselling Center Malaysia (JB Branch)
- MTS Psychology Counselling Centre

NGO & Community Organisations

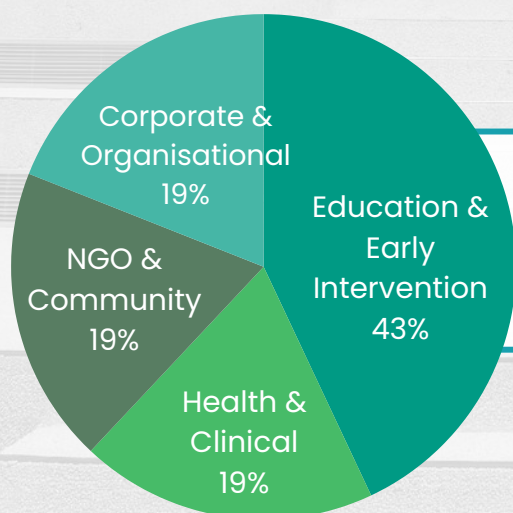
NGO placements allow students to apply psychological principles in community settings, often addressing social issues and supporting vulnerable populations.

- Asia Centre
- Cahaya Surya Bakti
- Care2Run
- Welfare Organization For The Disabled

Corporate & Organisational Settings

These placements demonstrate how psychological principles are applied in workplace settings, including human resources, training and development, and consumer behavior.

- Port Tanjung Pelepas, Johor
- Ernst & Young, KL Headquarters
- Petronas Dagangan Berhad, KL
- Sunway Property, Johor Branch



Psychology students placement based on industries

Note: This list represents our current vetted partnerships and is regularly updated. Students access the most current placement opportunities through our department resources.

Placement Timeline

BSc Psychology – 3-Year Programme

Year 1
Semester 2

Apr – May

Placement Briefing

Introduction to placement requirements

Placement Search & Application

Research placement sites and apply to placement providers from our established network.

Securing Placement & Documentation

Complete selection processes

After Year 1
Summer Period

Jun – Aug

Placement Period Begins

- Encouraged start after Part 1 exams confirmed
- Complete minimum 100 hours; maintain placement diary
- Early completion allows adequate time for assessment preparation.

Year 2
Semester 1 & 2

Sep – Dec
Jan – Feb
Mar – Apr

Return to Part 2 Studies

Continue Year 2 Studies

Students can complete placements during period as well

Assessment Submission

BSc Psychology – 4-Year Programme

After Year 2
Summer Period

May – Aug

Placement Search & Application

Begin researching and applying for year-long opportunities.

Securing Placement

Finalise placement arrangements before Part 2 exam results

Documentation & Setup

Career Office processes all legal and regulatory requirements

Year 3
Semester 1 & 2

Sept

Placement Period Begins

Begin with induction and goal-setting meetings with placement provider.

Core Placement Period

- 40 weeks (200 days) minimum + 15 days annual leave
- Regular supervision; complete all review meetings

Key Placement Year Milestones:

Week 1-2: Induction & Goal Setting Meeting

Month 3: Three-Month Review

Mid-placement: Formal review meeting with Placement Tutor

Final Month: End of Placement Review

Year 4
Semester 1

Sept

Assessment Submission

Submit written portfolio; prepare for return to academic study

Academic Re-entry

Begin final year project and advanced modules

Local Students Placement Experience



Thomas Tan Zi Sheng

Year 2 Psychology Student (2025)

Placement: Embrace Enrichment Centre, June–September 2024



As a teaching assistant at Embrace Enrichment Centre supporting children with special educational needs and disabilities, I participated in memorable events like a camping trip and Mid-Autumn Festival concert, helping prepare materials and training students for performances—challenging yet incredibly rewarding as I witnessed their progress regardless of how small.

Mariah Qistina Binti Ahmad Suffian

Year 3 Psychology Student (2025)

Placement: Bridging Minds Academy, JB, February – April 2024



As a Special Education Teacher at Bridging Minds Academy, I worked primarily with Early Learners aged 3 to 6, focusing on foundational skills such as numeracy, literacy and motor skills, while occasionally working with older students to observe diverse learning styles and adaptation strategies. Witnessing students' growth, particularly those who communicate nonverbally, motivated me to seek out more teaching opportunities despite the steep learning curve of applying classroom knowledge in real time and continuously creating new methods for each student's needs.



Neelufer Zahra Binte Mohammad Azim Ullah

Year 2 Psychology Student (2025)

Placement: Port of Tanjung Pelepas (PTP), May – August 2024



My placement at Port of Tanjung Pelepas was truly transformative, involving research, data analysis, and collaboration to develop a mental well-being policy for the company. Initially challenging was adapting from university's academic discussions to the corporate environment's diverse collaboration styles and working with colleagues from varied backgrounds, which highlighted the practical importance of interpersonal skills taught in class. This experience brought my academic knowledge of mental health, workplace behavior, and communication to life in real-world applications, solidifying my learning and deepening my appreciation for my education's relevance. Working in an industry not typically associated with psychology broadened my horizons and ignited my enthusiasm for mental health advocacy, helping me discover what truly resonates with me.



Sofea' Aqeela Rohaizad (International Student – Singapore)

Year 2 Psychology Student (2025)

Placement: Port of Tanjung Pelepas, May–September 2024



My placement at Port of Tanjung Pelepas' Sustainability Department was both eye-opening and transformative, involving research on mental health frameworks, employee surveys, and co-organizing large-scale departmental events promoting sustainability and mental health awareness.

As an international student, adapting to Malaysian workplace norms provided valuable insight into different professional cultures while developing skills in communication, event planning, survey design, and navigating corporate team dynamics for the first time. This experience beautifully connected my university learning to real-world applications, showing me how psychological concepts like communication, stress, and behavior change can be practically integrated into workplace wellbeing strategies rather than just theoretical or clinical contexts.

Although I may not pursue a traditional corporate career, this placement clarified that I'm drawn to meaningful work in social impact, education, or mental health advocacy, demonstrating that my skills are valuable across various settings and that there are many paths beyond conventional routes—most importantly, it proved I'm capable of adapting and contributing in new environments, even outside my comfort zone.

Fatima Noor (International Student– India)

Year 4 Psychology Student (2025)

Placement: University of Reading Malaysia, 100 hours

Global Mental Health Services (India), Sept 2023 – Jan 2024

Clover Learning Centre, Jan 2024 – Jul 2024



As a 4-year BSc Psychology with Professional Placement student, my undergraduate years at University of Reading Malaysia allowed me to explore different areas of psychology through various internships, beginning with my second-year 100-hour Research Assistant placement conducting literature reviews, collecting stimuli for research, and performing data cleaning—teaching me the importance of precision, critical thinking, and organization.

My placement year involved two distinct experiences: first as a Clinical Psychology Intern with Global Mental Health Services where I conducted literature reviews, facilitated psychoeducation programs, participated in role plays, and assisted in psychotherapy sessions under supervision, with the most meaningful aspect being taking case histories and learning to communicate through words, silence, expressions, and emotions. My second placement as a Teaching Assistant in a Montessori school gave me a completely new outlook on human growth and development, working to establish natural and enjoyable learning environments while recognizing the value of independent learning through guiding children in academic, practical life, and sensorial activities.



As an international student, the placement year enhanced my flexibility, empathy, and cultural awareness while allowing me to explore my interests and gain relevant skills in different cultural settings. Since there aren't many psychology-related internship opportunities in my hometown, this placement year helped me gain better understanding of my interests, providing clarity in shaping my long-term goal of working as a clinical psychologist specializing in child and adolescent mental health.

Transforming Theory into Professional Competencies

Communication & Interpersonal Skills

- Adapting communication style for unique audiences
- Active listening and empathetic responding
- Delivering presentations and explaining psychological concepts

Workplace Professionalism

- Understanding organizational structures and cultures
- Adhering to professional boundaries and ethics
- Time management and reliability
- Meeting deadlines and managing expectations

Teamwork & Collaboration

- Contributing effectively to multidisciplinary teams
- Understanding professional roles and responsibilities
- Giving and receiving constructive feedback

Professional Skills

Assessment & Observation

- Structured and unstructured observation techniques
- Recognizing patterns of behavior
- Data collection and documentation
- Applying theoretical frameworks to real-world situations
- Understanding the assessment process in applied settings

Applied Psychological Skills

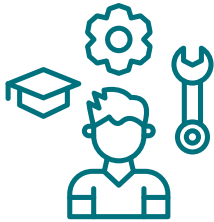
Intervention & Support

- Implementing evidence-based strategies
- Supporting individuals with diverse needs
- Adapting approaches based on response
- Understanding the intervention planning process
- Evaluating effectiveness of approaches

Student-Led Application Process

At SPCLS, our placement process balances student autonomy with structured support. This approach helps you develop essential professional skills while ensuring you have guidance when needed.

Why student-led?



Builds real-world job application skills



Encourages thoughtful career exploration



Develops initiative and self-reliance



Mirrors graduate recruitment processes

All to create an AUTHENTIC professional experience

Application Process

1



Explore and Research

- Review our vetted placement provider list
- Consider your career interests and goal
- Research organizations that interest you

2



Application and Screening

- Contact organizations directly
- Complete their selection process
- Receive placement offer

3



Formalise

- Submit required documentation
- Receive official authorisation
- Prepare for your first day

Support Available:



Guidance from
Placement Coordinator



CV and interview
preparation from
Career Office



Comprehensive
placement handbook
+ resources



Regular check-ins
throughout placement